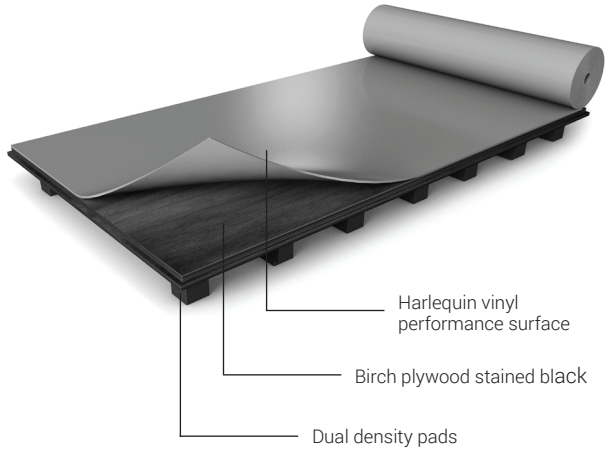
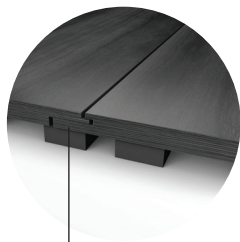
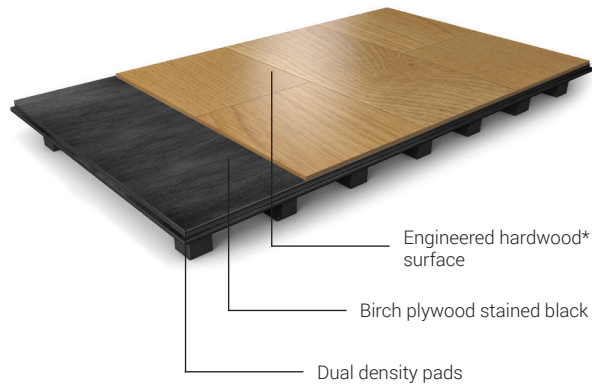




## Flexity Panels with Vinyl Surface



## Flexity Panels with Hardwood Surface



Tongue and groove joint

### American Harlequin Corporation

1531 Glen Avenue  
Moorestown, NJ 08057

(800) 642 6440  
contact@harlequinfloors.com  
harlequinfloors.com

The Company reserves the right to make any variation in design or construction of the material described.  
© Harlequin Floors 1/2019.

PHILADELPHIA  
FORT WORTH  
LOS ANGELES  
LAS VEGAS  
LONDON  
PARIS  
BERLIN  
LUXEMBOURG  
MADRID  
SYDNEY  
HONG KONG  
TOKYO

# Harlequin Flexity™

**Harlequin Flexity** is a cost-effective, self-install sprung floor panel system, designed for permanent or semi-permanent installation. Panels are laid in a brickwork fashion onto the sub-floor, so that cross joints do not coincide. The panels join together by a special tongue and groove, which are glued together for permanent installation or fixed using woodscrews at predetermined points along the tongue and groove for a semi-permanent solution.

**Harlequin Flexity** can be installed by anyone with fundamental carpentry skills and full instructions are provided. It's a cost-effective choice, helping to reduce the injury risks associated with dancing or performing on a hard, unsprung floor.

**Harlequin Flexity** is finished by choosing an appropriate Harlequin vinyl or engineered hardwood\* performance floor surface.

*\*Special order*

## Specification Guide

<b>Permanent or Portable</b>	Permanent or Semi-permanent
<b>Floor panel size</b>	44" x 88"
<b>Dance surface size</b>	42 $\frac{7}{8}$ " x 87 $\frac{1}{8}$ "
<b>Minimum floor thickness (before inclusion of chosen finish)</b>	1 $\frac{1}{2}$ "
<b>Minimum floor weight (before inclusion of chosen finish)</b>	2.4lb/ft <sup>2</sup>
<b>Testing standards</b>	BS EN 14904:20096
<b>Average shock absorption</b>	67%
<b>Maximum point load (BS EN 1195)</b>	2,482.4lbs
<b>Rolling load</b>	1500N
<b>Vertical deformation</b>	3.9mm

## Harlequin Sprung Floor Application Guide

Along with Harlequin Flexity, we offer additional sprung flooring options, which are listed below along with the recommended surface. These recommendations are based on experience and customer preference only. Please contact a Flooring Specialist to determine which option best suits your requirements.

✓ = We recommend.

	Allegro	Cascade	Fiesta	FreeStyle	Hardwood	Hi-Shine	Marine	Reversible	Reversible Pro	Standfast	Studio	Studio B
<b>Activity</b>		✓	✓	✓	✓		✓			✓	✓	✓
<b>AeroDeck</b>		✓	✓	✓		✓	✓	✓	✓	✓	✓	✓
<b>Flexity</b>		✓	✓	✓	✓	✓	✓	✓	✓	✓	✓	✓
<b>Liberty</b>		✓	✓	✓		✓	✓	✓	✓	✓	✓	✓
<b>Liberty (portable)</b>		✓		✓		✓		✓	✓		✓	✓
<b>Liberty LatchLoc</b>		✓		✓		✓		✓	✓	✓	✓	✓
<b>WoodSpring</b>		✓	✓	✓	✓		✓			✓	✓	✓

**CALL 800-642-6440 or VISIT [www.harlequinfloors.com](http://www.harlequinfloors.com)**

For samples or information on Harlequin Floors complete range of vinyl and sprung floors.