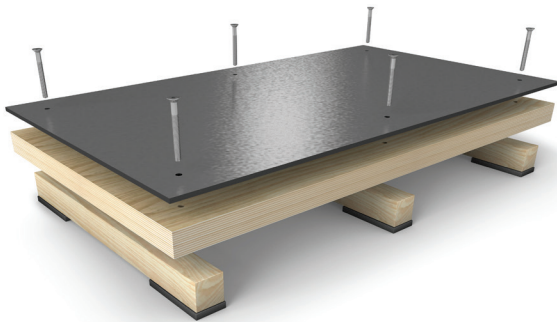
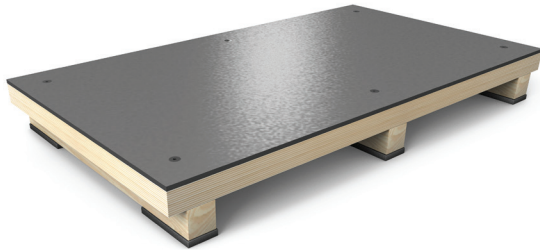
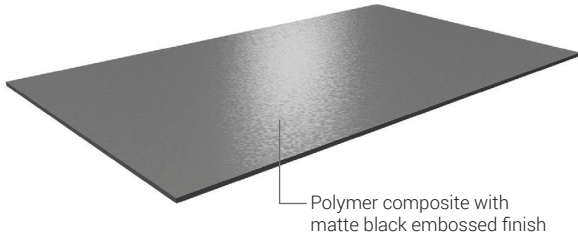




**Harlequin RockSure** is a polymer composite, a tough, easily managed stage surface designed for live performance spaces. This stage floor product is strong enough to support heavy loads, making it an ideal solution for all theatrical productions. The floor provides a matte black surface which does not require painting.

**Utilization:** Harlequin RockSure can be used for both new stage builds and stage refurbishment. It provides an attractive matte black alternative to more traditional stage surfaces such as wood, a painted "sacrificial" layer of hardboard, or Harlequin heavy-duty vinyl.

**Installation:** Harlequin RockSure can be installed by our highly-skilled technical team or is available for purchase as a stand-alone material. It is manufactured to be squared, pre-drilled, and counter-sunk, and can be worked with standard woodworking tools.



Images not to scale; for illustration purposes only

## Specification Guide

<b>High Impact Resistance</b>	Withstands shock and damage from falling objects e.g. shackles, clamps, tools, etc.
<b>Abrasion Resistant</b>	Suitable for lifts, castors, and movement of props — load-ins and load-outs. Extremely hard wearing.
<b>Flame Retardant</b>	Safe in fire risk areas, e.g. pyrotechnics.
<b>Dielectric Material</b>	Extreme electrical resistance and insulation.
<b>Uniform Body Color</b>	No painting required. Scratches are imperceptible.
<b>Compression Strength Exceeds 24,000 psi</b>	Extremely difficult to damage. Will not warp.
<b>High Chemical Resistance</b>	Shrugs off water and common stage chemical spills.
<b>Low Coefficient of Thermal Expansion</b>	Expansion joints not required.
<b>Machineable</b>	Can be drilled and screwed as conventional hardwood with carpenter's tools.
<b>High Fusion Temperature</b>	Withstands heat exceeding 390°F.

<b>Installation</b>	Permanent
<b>Floor Panel Size</b>	48" x 96"
<b>Color</b>	Matte black with a frost emboss
<b>Weight</b>	1.7 lbs/ft <sup>2</sup>
<b>Thickness</b>	6mm (nominal)
<b>Fire rating</b>	Bfl-s1 (EN 13501-1)
<b>Flammability</b>	UL 94 HB
<b>Point Load</b>	Dependent on chosen Harlequin sub-floor
<b>Price</b>	\$275 per panel (squared, pre-drilled, countersunk)

**American Harlequin Corporation**  
1531 Glen Avenue  
Moorestown, NJ 08057

(800) 642 6440  
contact@harlequinfloors.com  
harlequinfloors.com

The Company reserves the right to make any variation in design or construction of the material described.  
© Harlequin Floors 1/2024

PHILADELPHIA  
LOS ANGELES  
LAS VEGAS  
LONDON  
PARIS  
BERLIN  
LUXEMBOURG  
MADRID  
SYDNEY  
HONG KONG  
TOKYO

**CALL 800-642-6440 or VISIT [www.harlequinfloors.com](http://www.harlequinfloors.com)**  
For samples or information on Harlequin Floors complete range of vinyl and sprung floors.